

# GN 709.2 | Locking elements with threaded blind hole

Steel



- 1
- 2
- 3
- 4
- 5
- 6
- 7
- 8
- 9
- 10
- 11
- 12
- 13
- 14
- 15
- 16
- 17
- 18

## MATERIAL

Hardened phosphated steel.

## ELASTIC ELEMENT

Polyurethane (PUR).

## STANDARD EXECUTIONS

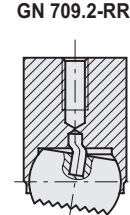
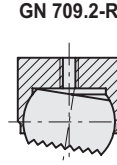
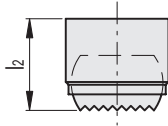
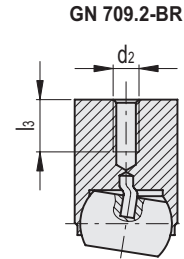
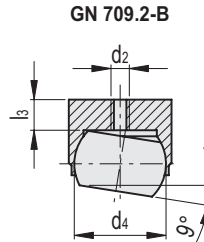
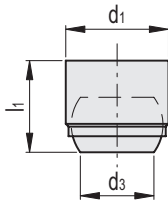
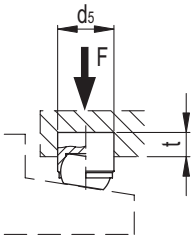
Hardened steel ball:

- **GN 709.2-B**: ball with smooth and flat face, not reversible.
- **GN 709.2-BR**: ball with smooth and flat face, not reversible, with automatic return.
- **GN 709.2-R**: ball with knurled and flat face, not reversible.
- **GN 709.2-RR**: ball with knurled and flat face, not reversible, with automatic return.

## FEATURES AND APPLICATIONS

GN 709.2 clamping elements are used as mobile supports or for clamping workpieces.

Maximum inclination of the ball plane = 9°.



Conversion Table 1 mm = 0.039 inch	
d1	
mm	inch
12	0.47
18	0.71
28	1.10

## GN 709.2-B

METRIC

Code	Description	d1 n6	d2	d3	d4	l1 ±0.02	l3	d5 H7	t min.	Max. static load F [kN]	⚖
GN.76101	GN 709.2-12-B	12	M3	7.2	10	11	3.2	12	6	10	8
GN.76111	GN 709.2-18-B	18	M4	10.5	16	17	4	18	8	25	30
GN.76121	GN 709.2-28-B	28	M5	20	25	25	5.5	28	13	90	80

## GN 709.2-BR

GN.76102	GN 709.2-12-BR	12	M3	7.2	10	17	3.2	12	12	10	8
GN.76112	GN 709.2-18-BR	18	M4	10.5	16	23	4	18	14	25	39
GN.76122	GN 709.2-28-BR	28	M5	20	25	34	6	28	22	90	140

## GN 709.2-R

METRIC

Code	Description	d1 n6	d2	d3	d4	l2 ±0.1	l3	d5 H7	t min.	Max. static load F [kN]	⚖
GN.76106	GN 709.2-12-R	12	M3	7.2	10	11	3.2	12	6	10	10
GN.76116	GN 709.2-18-R	18	M4	10.5	16	17	4	18	8	25	30
GN.76126	GN 709.2-28-R	28	M5	20	25	25	5.5	28	13	90	80

## GN 709.2-RR

GN.76107	GN 709.2-12-RR	12	M3	7.2	10	17	3.2	12	12	10	32
GN.76117	GN 709.2-18-RR	18	M4	10.5	16	23	4	18	14	25	40
GN.76127	GN 709.2-28-RR	28	M5	20	25	34	6	28	22	90	150

Machine elements

1038



Models all rights reserved in accordance with the law. Always mention the source when reproducing our drawings and photos.

